



Medical Resource Programs

CAREChest.org

Board of Directors

President: Brant Skanson, Sierra Family Pharmacies
Vice President: Jason Oetjen, Rafferty Oetjen CPA
Treasurer: Connie Christiansen, Christiansen Accounting Network
Secretary: Connie Stutchman, Philanthropist
Immediate Past President: Steve Boucher, D&L Tile, Inc.

Damon L. Booth, Esq., High West Law
 Andrea Cantlon, LP Insurance Services, Inc.
 Jacquie Cheun-Jensen, Silver State ACO, LLC.
 Mike Connolly, Sierra Taphouse, Ole Bridge Pub, Brewer's Cabinet
 Danielle Dolan-Plymell, Chez Vous
 Jesus "Chuy" Gutierrez, Mari Chuy's Mexican Kitchen
 Angela Handler, Loka Tile Group, Inc.
 Michelle Isherwood, Sagacity Operations Solutions
 Bill Kahl, Founder
 Chris Kahl, Ole Bridge Pub, Brewer's Cabinet
 Colin McNerney, VA Sierra Nevada HCS
 John Owens, Advisory Board Chair
 Angie Ruyak, LHC Group
 Allan Ward, Home Instead Senior Care



CAREChest.org



care_chest



carechest



CARE Chest Headquarters (775) 829-2273
 7910 North Virginia Street, Reno, NV 89506

CARE Chest South 866-206-5242
 3080 West Post Road, Las Vegas, NV 89118



Annual Report 2022

Renewing Hope ~ Nurturing Independence

Medical Equipment and Supplies: Durable medical equipment is loaned for as long as it is needed, and one-time use supplies can be re-ordered monthly for clients who qualify. If clients do not qualify because their monthly income is too high, they may enroll in Club CARE Chest for an annual \$50 membership. **8,930 individuals received services this year.**

Prescription Assistance: CARE Chest provides up to \$300 per client annually to pay for prescription medication or to help with co-pays. **457 individuals participated in this program during FY22**

Diabetic Supplies: CARE Chest's Diabetic Supplies program distributes testing supplies, including blood-glucose monitors, test strips, syringes and lancets. Supplies are available monthly with a prescription. **3,977 individuals received services in FY22.**

Supplemental Medical Nutrition: CARE Chest provides doctor-prescribed supplemental medical nutrition such as Ensure, Glucerna, Pediasure and Instant Breakfast. Qualified clients receive one case each month. **3,201 individuals were served in FY22.**

Independent Living & CARE Loans: CARE Chest provides assistive technology and helps individuals make modifications to their home and vehicle for accessibility and independence. CARE Chest also administers a low-interest loan program to fund similar projects. Both programs serve the entire State of Nevada. **354 Nevadans with disabilities received services during FY22.**

Mobile CARE Chest: Through Mobile CARE Chest we are taking our traditional programming out into the Reno/Sparks metro community monthly. **We connect with more than 1,000 potential consumers and continue to add consumers to our monthly distribution roster.**

Rural Outreach: CARE Chest partners with the Food Bank of Northern Nevada and Catholic Charities of Northern Nevada to deliver our program services to residents living in rural communities in the following Northern Nevada counties: Churchill, Douglas, Lyon, Lander, Mineral, Pershing, Storey, rural Washoe, White Pine, and Carson City. **2,859 individuals were served in their communities during FY22.**

Our Mission:

CARE Chest of Sierra Nevada is a Nevada nonprofit agency serving individuals in need by providing medical resources free of charge.



As the pandemic began to slow its grip on the world, CARE Chest continued to provide its essential medical resource programming throughout Nevada. In 2022 alone, demand for medical equipment and life-saving supplies increased by more than 15% over 2021. Because of the generosity of the communities in which CARE Chest operates, we have been able to expand to keep up with the ever-increasing demand.

Keeping up with the rising need has not been easy nor has it been possible without continued adaptation and creativity by the CARE Chest team. We continue to refine our service delivery by providing our traditional programming curbside in the parking lot in Reno, in larger distribution sites across the Reno/ Sparks metros and in numerous frontier communities throughout The State in conjunction with several community partners. By taking programming into the parking lot and communities, CARE Chest is better able to eliminate potential barriers to service often experienced by those we serve. Potential barriers include lack of access to transportation, limitations to mobility due to injury or illness, and generally compromised health status. Serving those most in need from their vehicles or directly in their neighborhoods helps ensure the safety of our consumers and our team by preventing close contact and providing dependable, routine distributions each month.

Thank you for being a part of our CARE Chest family. Without the generous support from donors and community partners like you, we simply could not do this vital work. Together, we are...

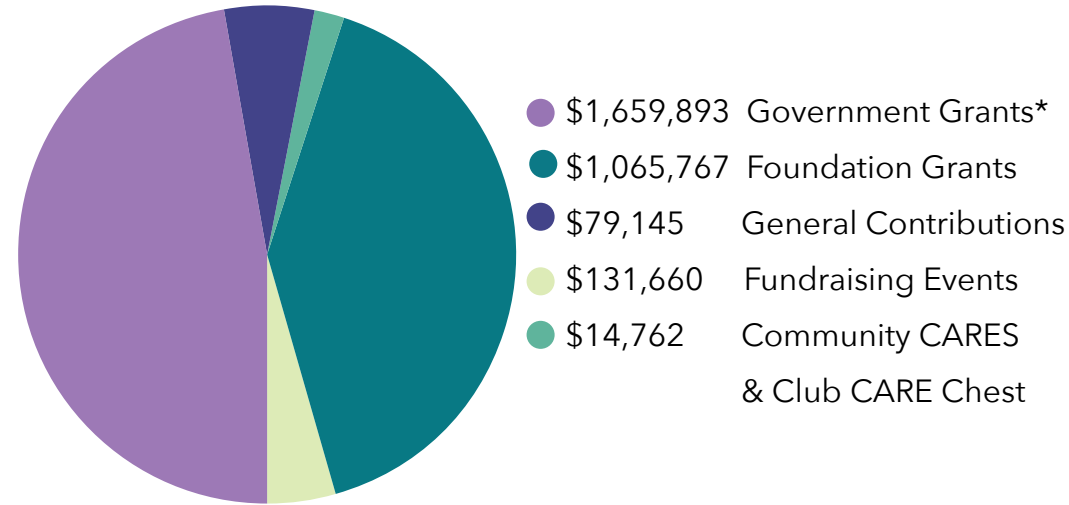
Renewing Hope ~ Nurturing Independence!

Anne M. McNulty
Executive Director

Community Support

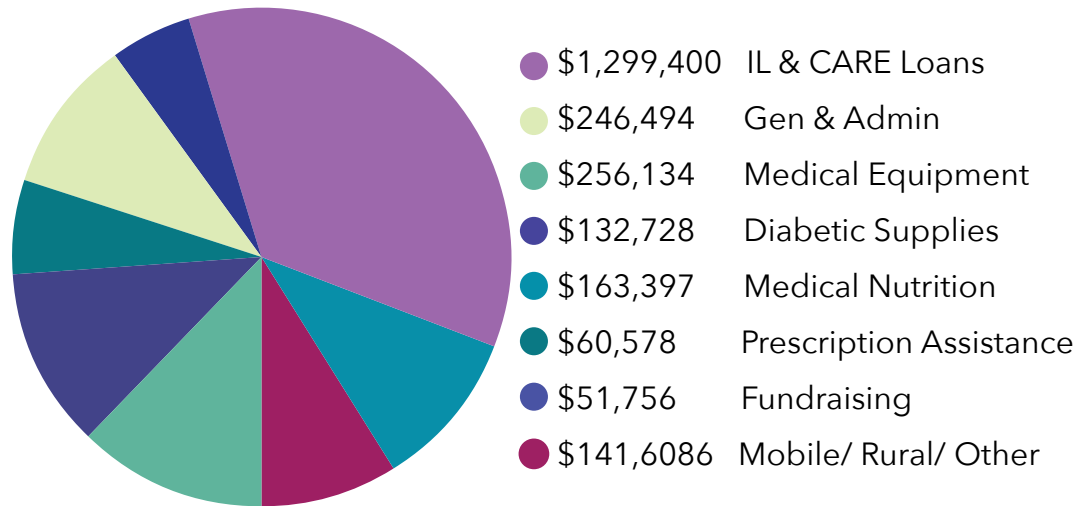
CARE Chest of Sierra Nevada is the region's only nonprofit provider of medical equipment and supplies. In the last 32- years, we have provided more than 360,000 services to our community, furthering public health while reducing healthcare expenditures.

Revenue - \$2,952,227

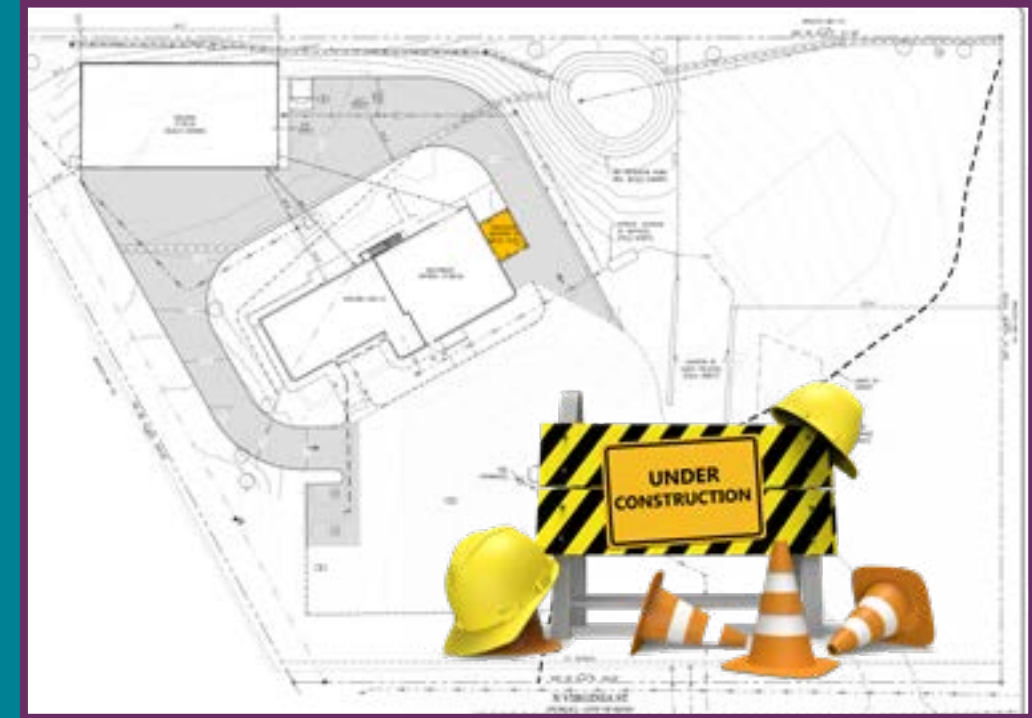


*Government Grants include state-wide funding for the Independent Living Program, funding from the Payroll Protection Program and COVID relief funding from the State of Nevada.

Expenses - \$2,352,095



A Plan for the Future of 7910 North Virginia Street



Construction Begins in 2023!

To make sure CARE Chest can keep up with the demand for services and provide those services safely and efficiently, modifications to our main structure and additional warehouse space are desperately needed. The addition of a porte cochere on our existing building which will house a drive-up window will help minimize the effects of the weather on our team and consumers. It will also allow us to continue to efficiently serve consumers quickly utilizing our new drive-through model. Additionally, in order to make sure we can store donated and purchased medical equipment and supplies needed to keep up with the current community demand and to plan for the future, additional warehouse space is needed. We are thrilled to announce that this vital project has been completely funded and construction will begin in 2023 after years of planning and working closely with donors, our design team, builders, and The City of Reno.

15,032
individuals served

23,194
items distributed

